



Chris Dempsey

CRANES

All Your Lifting Solutions

We look forward to providing a full lifting solution for your next project

Our Team are experienced in managing and organising all your lifting requirements – nothing too big or too small

Contact us for an obligation free quote.

Crane Specification:

TEREX AT20-3

www.cranehirequeensland.com.au

AT 20-3

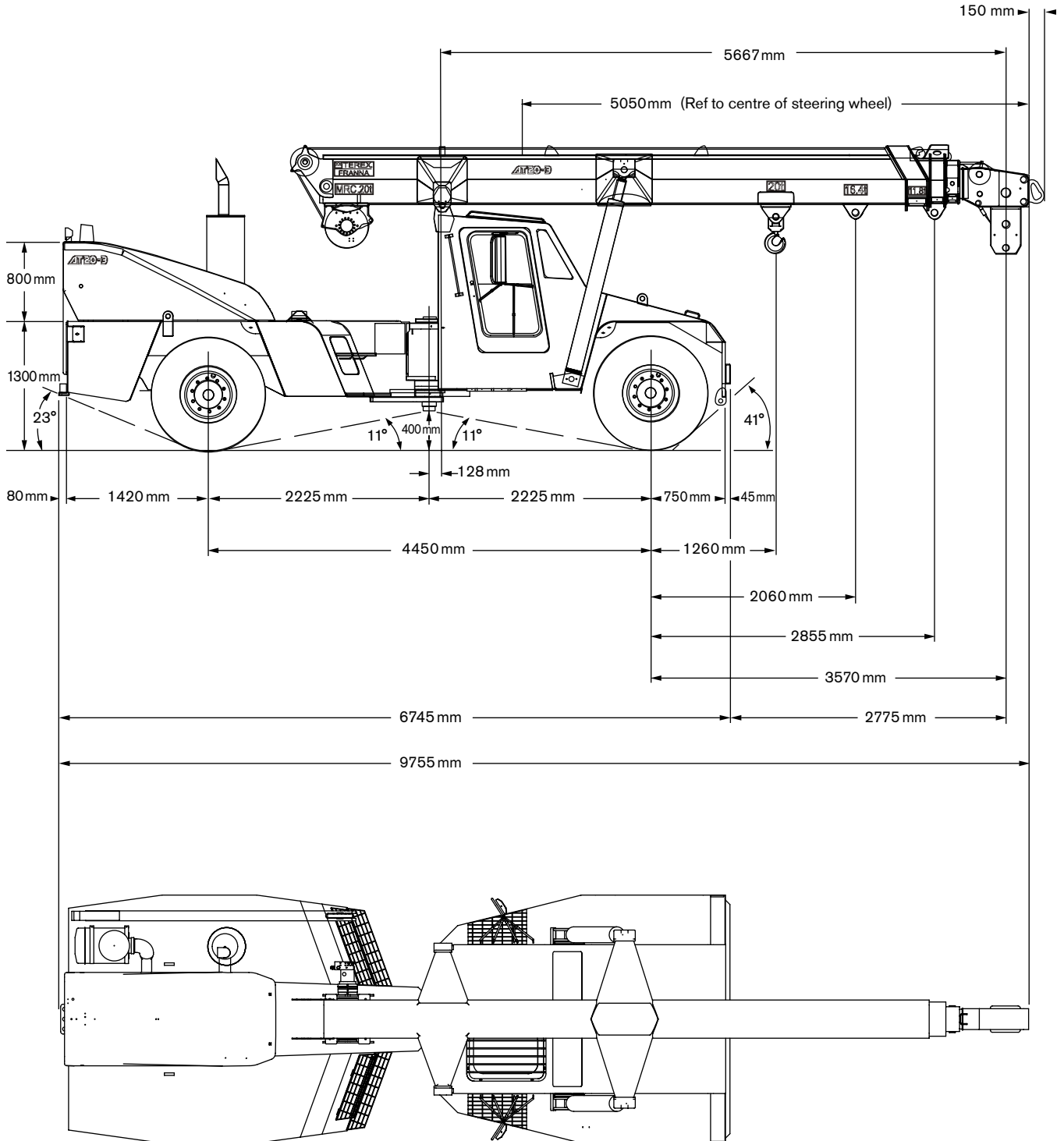
**Features: AT 20-3**

- ▶ 20 tonne at 1.4 m radius
- ▶ 1.60 tonne at 15.8 m radius
- ▶ 17 m maximum hook height
- ▶ Hook block (4 parts) capacity 16.8 tonne
- ▶ Single line 4.2 tonne

DIMENSIONS

AT 20-3

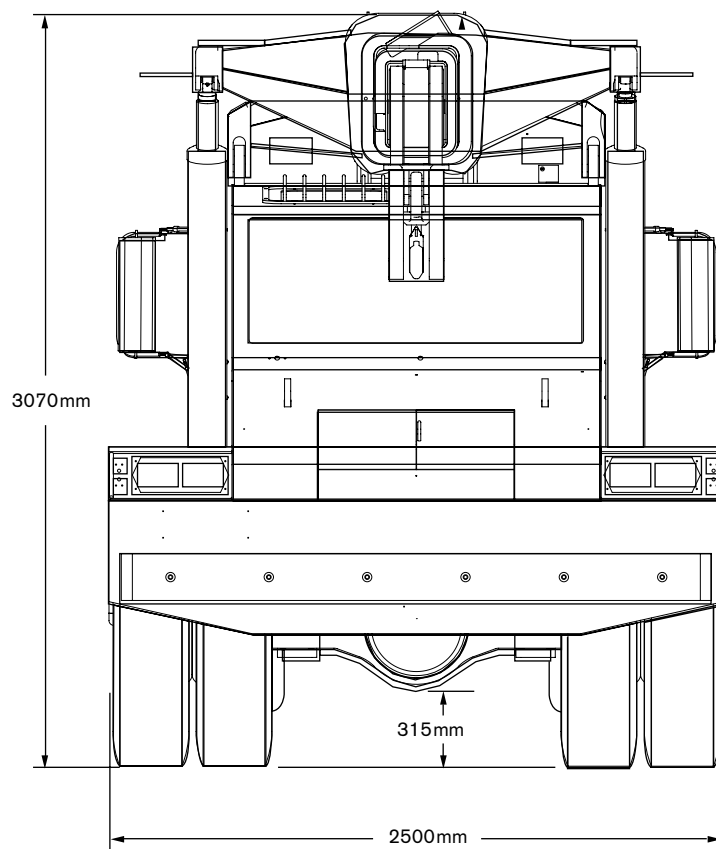
Crane Dimensions



DIMENSIONS

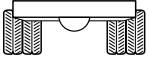
Crane Dimensions

AT 20-3

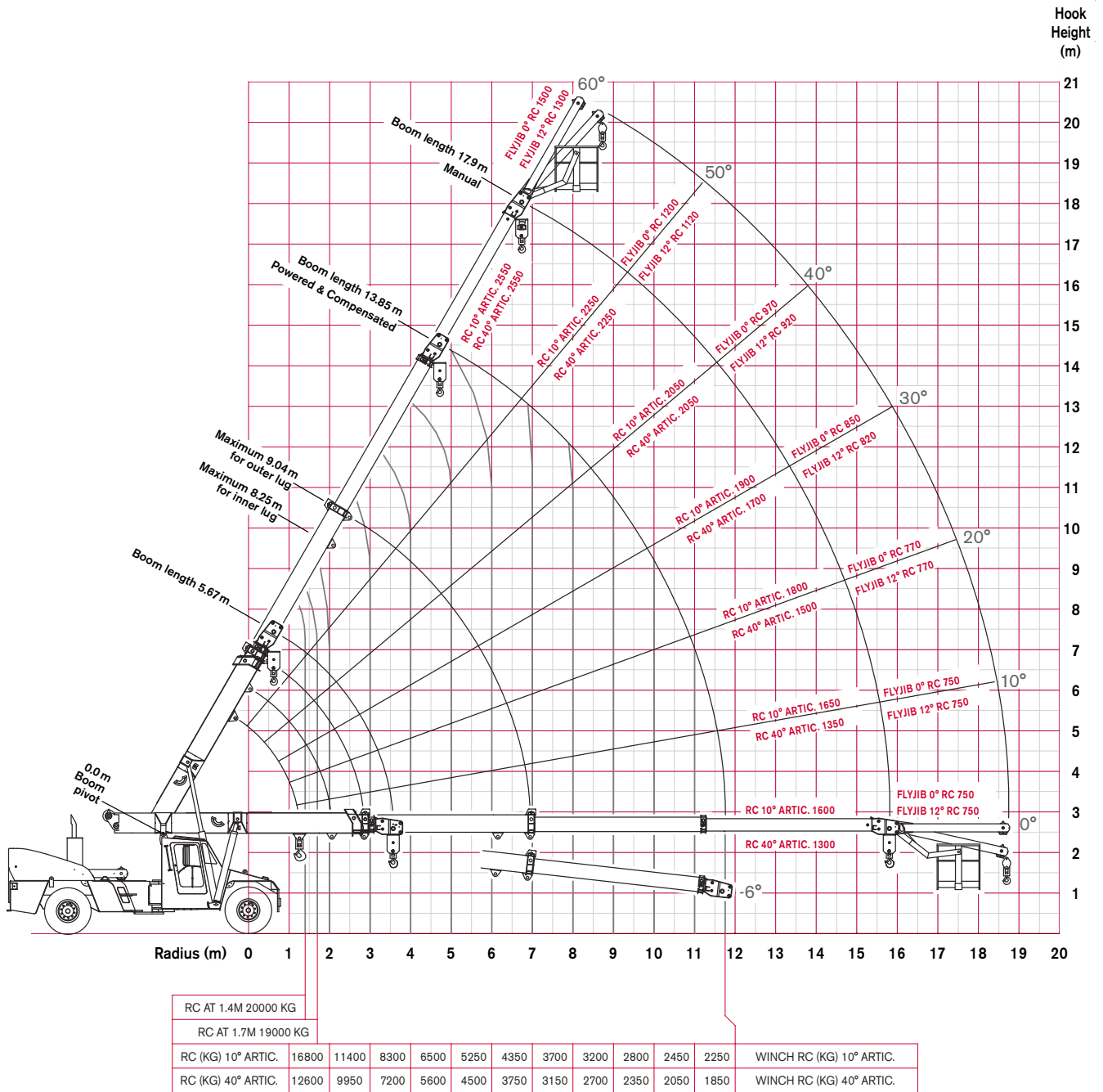


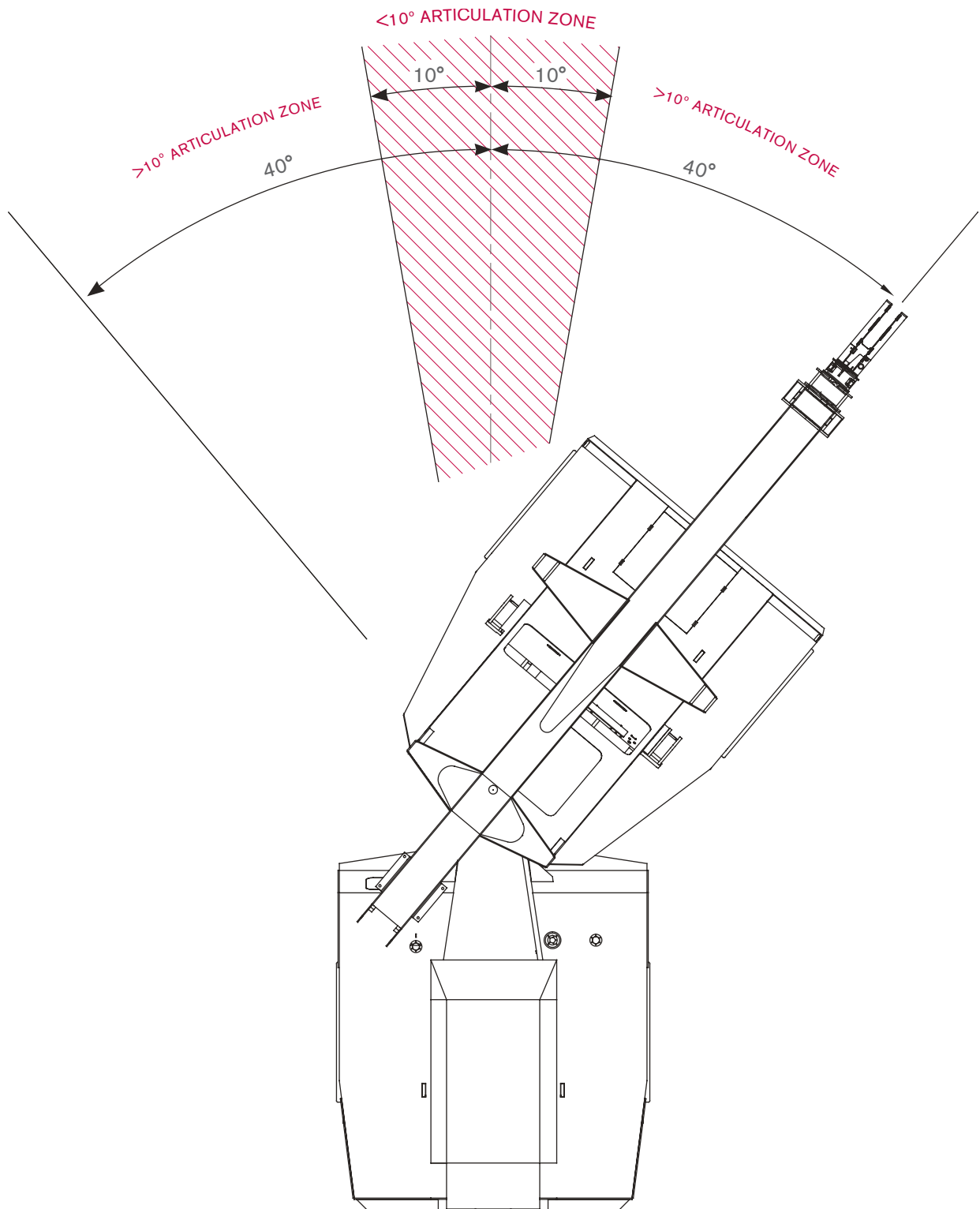
RADIUS LOAD CHART

AT 20-3



Pick & Carry 0.4m/s (1.44 km/h); On rubber 66.6%

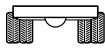




LOAD CHART

AT 20-3

Fallblock



Pick & Carry 0.4 m/s (1.44 km/h); On rubber 66.6%



5.67–13.85 m

AS 1418.5

| m | Boom Length (m) | | | | | | | | | | | | | | | | | m | | | |
|-------|-----------------|--------|--------|--------|--------|--------|--------|-------|--------|--------|--------|--------|--------|--------|---------|---------|---------|---------|-------|-------|-------|
| | 5.67 | 6.00 | 6.50 | 7.00 | 7.50 | 8.00 | 8.50 | 9.00 | 9.50 | 10.00 | 10.50 | 11.00 | 11.50 | 12.00 | 12.50 | 13.00 | 13.50 | | 13.85 | | |
| kg | kg | kg | kg | kg | kg | kg | kg | kg | kg | kg | kg | kg | kg | kg | kg | kg | kg | kg | kg | m | |
| 1.6 | 16800 | 16250 | 15450 | 14900 | | | | | | | | | | | | | | | | 1.6 | |
| | 12600 | 12600 | 12600 | 12600 | | | | | | | | | | | | | | | | | 1.6 |
| | 48° | 51° | 54° | 57° | | | | | | | | | | | | | | | | | |
| 2.0 | 16800 | 16800 | 16500 | 15700 | 15100 | 14700 | 14350 | | | | | | | | | | | | | 2.0 | |
| | 12600 | 12600 | 12600 | 12600 | 12600 | 12600 | 12600 | | | | | | | | | | | | | | 2.0 |
| | 42° | 46° | 50° | 53° | 56° | 58° | 60° | | | | | | | | | | | | | | |
| 2.5 | 13900 | 13900 | 13900 | 13850 | 13850 | 13850 | 13850 | 13200 | 13000 | | | | | | | | | | | 2.5 | |
| | 12150 | 12150 | 12100 | 12100 | 12100 | 12100 | 12100 | 12050 | 12050 | | | | | | | | | | | | 2.5 |
| | 34° | 39° | 44° | 48° | 51° | 54° | 56° | 58° | 60° | | | | | | | | | | | | |
| 3.0 | 11450 | 11450 | 11450 | 11400 | 11400 | 11400 | 11400 | 11400 | 11400 | 11150 | 10250 | | | | | | | | | 3.0 | |
| | 9950 | 9950 | 9950 | 9950 | 9950 | 9950 | 9900 | 9900 | 9900 | 9900 | 9900 | | | | | | | | | | 3.0 |
| | 25° | 31° | 37° | 42° | 46° | 49° | 52° | 55° | 57° | 59° | 60° | | | | | | | | | | |
| 3.5 | 9650 | 9650 | 9650 | 9650 | 9650 | 9650 | 9650 | 9650 | 9650 | 9650 | 9500 | 8150 | 7500 | | | | | | | 3.5 | |
| | 8400 | 8400 | 8400 | 8400 | 8400 | 8400 | 8400 | 8400 | 8400 | 8350 | 8350 | 8150 | 7500 | | | | | | | | 3.5 |
| | 8° | 20° | 29° | 36° | 41° | 45° | 48° | 51° | 53° | 55° | 57° | 59° | 60° | | | | | | | | |
| 4.0 | 9450 | 8550 | 8350 | 8350 | 8350 | 8350 | 8350 | 8350 | 8300 | 8300 | 8300 | 7600 | 7000 | 6700 | 6450 | | | | | 4.0 | |
| | 8200 | 7450 | 7250 | 7250 | 7250 | 7250 | 7250 | 7250 | 7200 | 7200 | 7200 | 7200 | 7000 | 6700 | 6450 | | | | | | 4.0 |
| | (3.57) | (3.90) | 19° | 28° | 35° | 39° | 43° | 47° | 49° | 52° | 54° | 56° | 57° | 59° | 60° | | | | | | |
| 4.5 | | | 7500 | 7300 | 7300 | 7300 | 7300 | 7300 | 7300 | 7300 | 7300 | 7150 | 6550 | 6250 | 6050 | 5800 | 5650 | | | 4.5 | |
| | | | 6500 | 6350 | 6350 | 6350 | 6350 | 6350 | 6300 | 6300 | 6300 | 6300 | 6300 | 6250 | 6050 | 5800 | 5650 | | | | 4.5 |
| | | | (4.40) | 19° | 27° | 34° | 38° | 42° | 45° | 48° | 50° | 52° | 54° | 56° | 58° | 59° | 60° | | | | |
| 5.0 | | | | 6650 | 6500 | 6500 | 6500 | 6500 | 6500 | 6500 | 6500 | 6500 | 6150 | 5900 | 5650 | 5450 | 5300 | 5150 | | 5.0 | |
| | | | | 5750 | 5600 | 5600 | 5600 | 5600 | 5600 | 5600 | 5600 | 5600 | 5600 | 5600 | 5600 | 5450 | 5300 | 5150 | | | 5.0 |
| | | | | (4.90) | 18° | 27° | 33° | 37° | 41° | 44° | 47° | 49° | 51° | 53° | 55° | 56° | 58° | 59° | | | |
| 6.0 | | | | | 5950 | 5350 | 5250 | 5250 | 5250 | 5250 | 5250 | 5250 | 5250 | 5250 | 5050 | 4850 | 4700 | 4600 | | 6.0 | |
| | | | | | 5100 | 4600 | 4550 | 4550 | 4550 | 4500 | 4500 | 4500 | 4500 | 4500 | 4500 | 4500 | 4500 | 4500 | | | 6.0 |
| | | | | | (5.40) | (5.90) | 17° | 25° | 31° | 35° | 39° | 42° | 45° | 47° | 49° | 51° | 53° | 54° | | | |
| 7.0 | | | | | | 4850 | 4450 | 4400 | 4400 | 4400 | 4400 | 4400 | 4400 | 4350 | 4350 | 4350 | 4200 | 3950 | | 7.0 | |
| | | | | | | 4200 | 3800 | 3750 | 3750 | 3750 | 3750 | 3750 | 3750 | 3750 | 3750 | 3750 | 3750 | 3750 | | | 7.0 |
| | | | | | | (6.40) | (6.90) | 16° | 24° | 29° | 34° | 37° | 40° | 43° | 45° | 47° | 48° | | | | |
| 8.0 | | | | | | | | | 4100 | 3750 | 3700 | 3700 | 3700 | 3700 | 3700 | 3700 | 3700 | 3600 | | 8.0 | |
| | | | | | | | | | 3500 | 3200 | 3150 | 3150 | 3150 | 3150 | 3150 | 3150 | 3150 | 3150 | | | 8.0 |
| | | | | | | | | | (7.40) | (7.90) | 15° | 23° | 28° | 32° | 36° | 38° | 41° | 43° | | | |
| 9.0 | | | | | | | | | | | 3500 | 3250 | 3200 | 3200 | 3200 | 3200 | 3200 | 3200 | | 9.0 | |
| | | | | | | | | | | | 2950 | 2750 | 2700 | 2700 | 2700 | 2700 | 2700 | 2700 | | | 9.0 |
| | | | | | | | | | | | (8.40) | (8.90) | 15° | 22° | 27° | 31° | 34° | 36° | | | |
| 10.0 | | | | | | | | | | | | | 3000 | 2800 | 2800 | 2800 | 2800 | 2800 | | 10.0 | |
| | | | | | | | | | | | | | 2550 | 2400 | 2350 | 2350 | 2350 | 2350 | | | 10.0 |
| | | | | | | | | | | | | | (9.40) | (9.90) | 14° | 21° | 26° | 29° | | | |
| 11.0 | | | | | | | | | | | | | | | 2650 | 2500 | 2450 | 2450 | | 11.0 | |
| | | | | | | | | | | | | | | | 2200 | 2100 | 2050 | 2050 | | | 11.0 |
| | | | | | | | | | | | | | | | (10.40) | (10.90) | 13° | 18° | | | |
| 11.75 | | | | | | | | | | | | | | | | | 2350 | 2250 | | 11.75 | |
| | | | | | | | | | | | | | | | | | 1950 | 1850 | | | 11.75 |
| | | | | | | | | | | | | | | | | | (11.40) | (11.75) | | | |

- RC (kg) < than 10° articulation
- RC (kg) > than 10° articulation
- Boom angle
- Radius at 0° boom angle
- Loads above red line are structural

Notes to lifting capacity

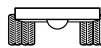
Lifting capacities do not exceed 66.6% of tipping load. Weight of hook blocks and slings is part of the load, and is to be deducted from the capacity ratings. Consult Rated Capacity Manual for further details.


Note: Data published herein is intended as a guide only and shall not be construed to warrant applicability for lifting purposes. Crane operation is subject to the computer charts and Rated Capacity Manual both supplied with the crane.

LOAD CHART

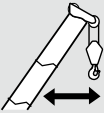
AT 20-3

Fallblock, Manual

 Pick & Carry 0.4 m/s (1.44 km/h); On rubber 66.6%

 9.72–17.90 m

AS 1418.5

| Maximum Radius  | Rated Capacity Maximum Extension Maximum Length 17.90 m |
|--|--|
| | m / kg |
| 6.74 | 2550 |
| | 2550 |
| | 60° |
| 9.31 | 2250 |
| | 2250 |
| | 50° |
| 11.53 | 2050 |
| | 2050 |
| | 40° |
| 13.34 | 1900 |
| | 1700 |
| | 30° |
| 14.67 | 1800 |
| | 1500 |
| | 20° |
| 15.51 | 1650 |
| | 1350 |
| | 10° |
| 15.80 | 1600 |
| | 1300 |
| | 0° |

Notes to lifting capacity

Read and understand warning notes before operating crane.

Weight of slings & hook block to be added to load.

Maximum extension length is 17.90 m.

17.9 m boom length includes manual 3rd extension.

Ratings for manual extension are structural and based on boom angle, not radius.





The ratings do not change if the power sections are retracted with the manual section extended.

Lifting capacities do not exceed 66.6% of tipping load.

Weight of hook blocks and slings is part of the load, and is to be deducted from the capacity ratings.

Consult Rated Capacity Manual for further details.

Data published herein is intended as a guide only and shall not be construed to warrant applicability for lifting purposes. Crane operation is subject to the computer charts and Rated Capacity Manual both supplied with the crane.

-  RC (kg) < than 10° articulation
-  RC (kg) > than 10° articulation
-  Boom angle
-  Loads above red line are structural