



Chris Dempsey

CRANES

All Your Lifting Solutions

We look forward to providing a full lifting solution for your next project

Our Team are experienced in managing and organising all your lifting requirements – nothing too big or too small

Contact us for an obligation free quote.

Crane Specification:

TEREX AT15

www.cranehirequeensland.com.au

AT 15-3



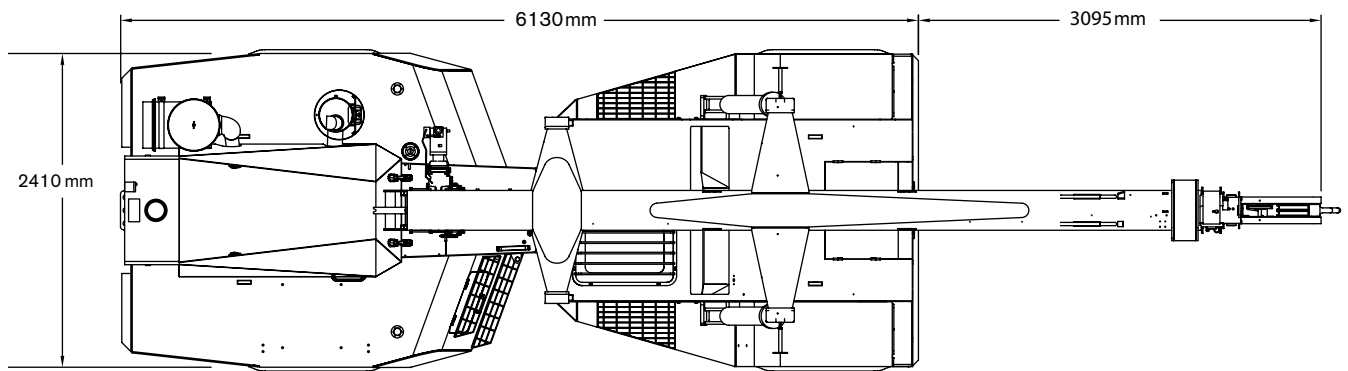
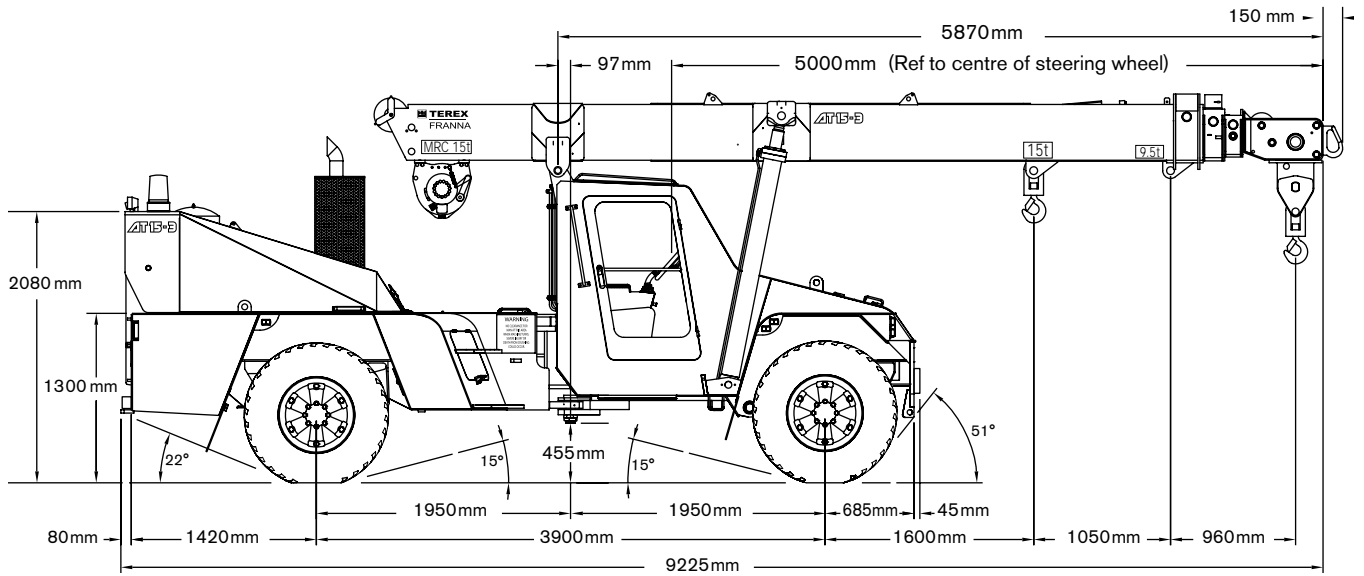
Features: AT 15-3

- ▶ 15 tonne at 1.6 m radius
- ▶ 1.05 tonne at 15.86 m radius
- ▶ 17 m maximum hook height
- ▶ Hook block (3 parts) capacity 10.5 tonne
- ▶ Single line 3.5 tonne

DIMENSIONS

AT 15-3

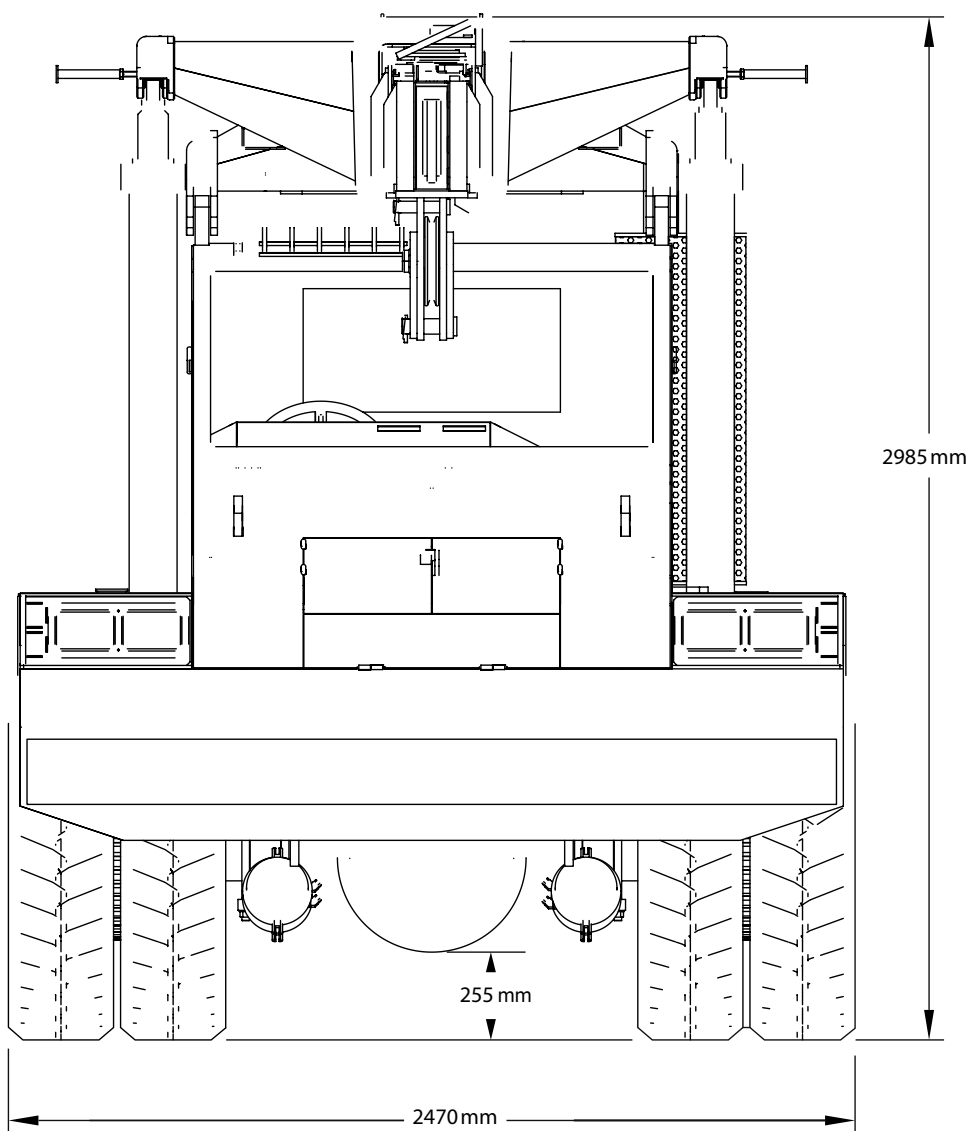
Crane Dimensions



DIMENSIONS

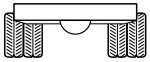
AT 15-3

Crane Dimensions

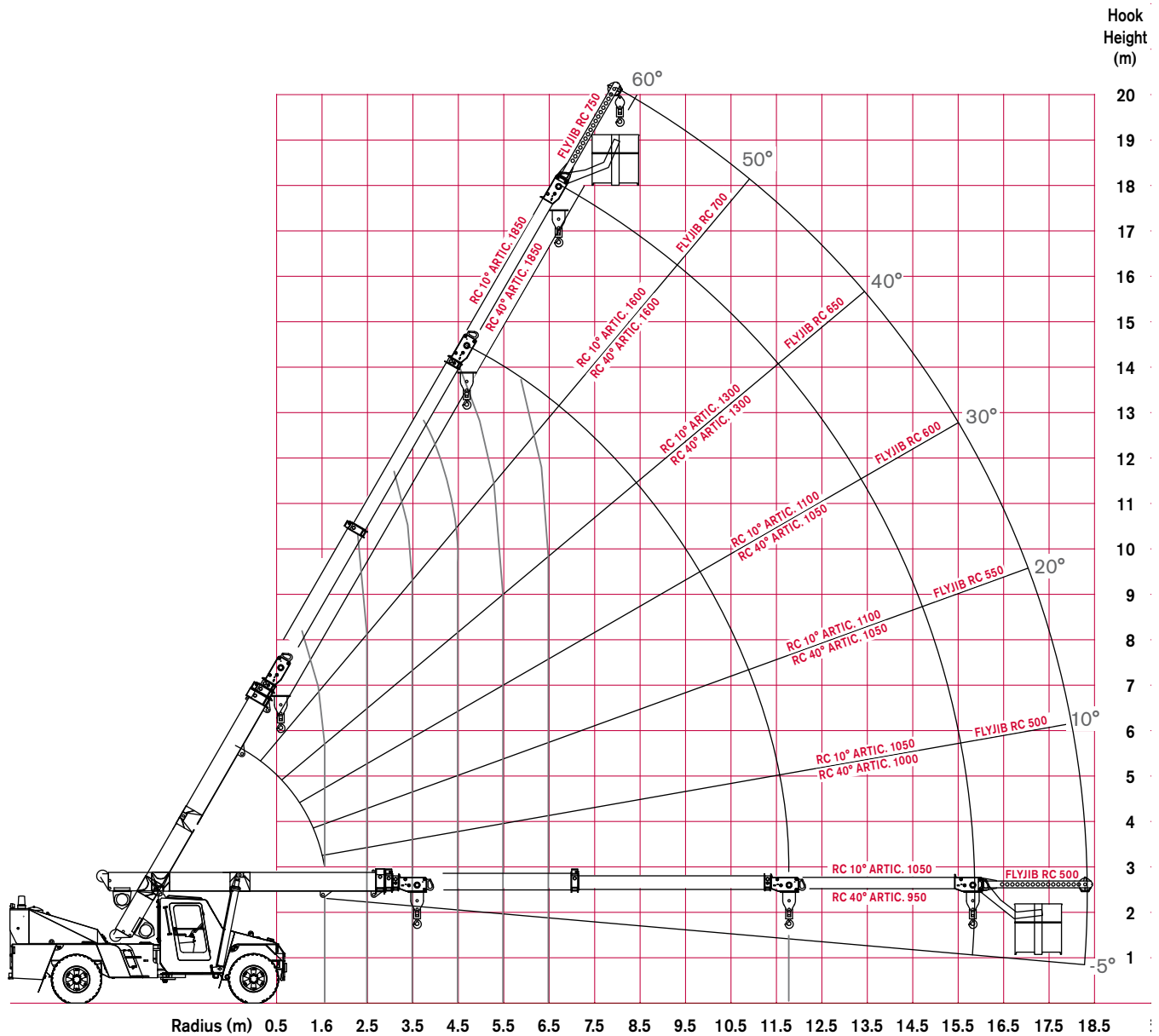


RADIUS LOAD CHART

AT 15-3

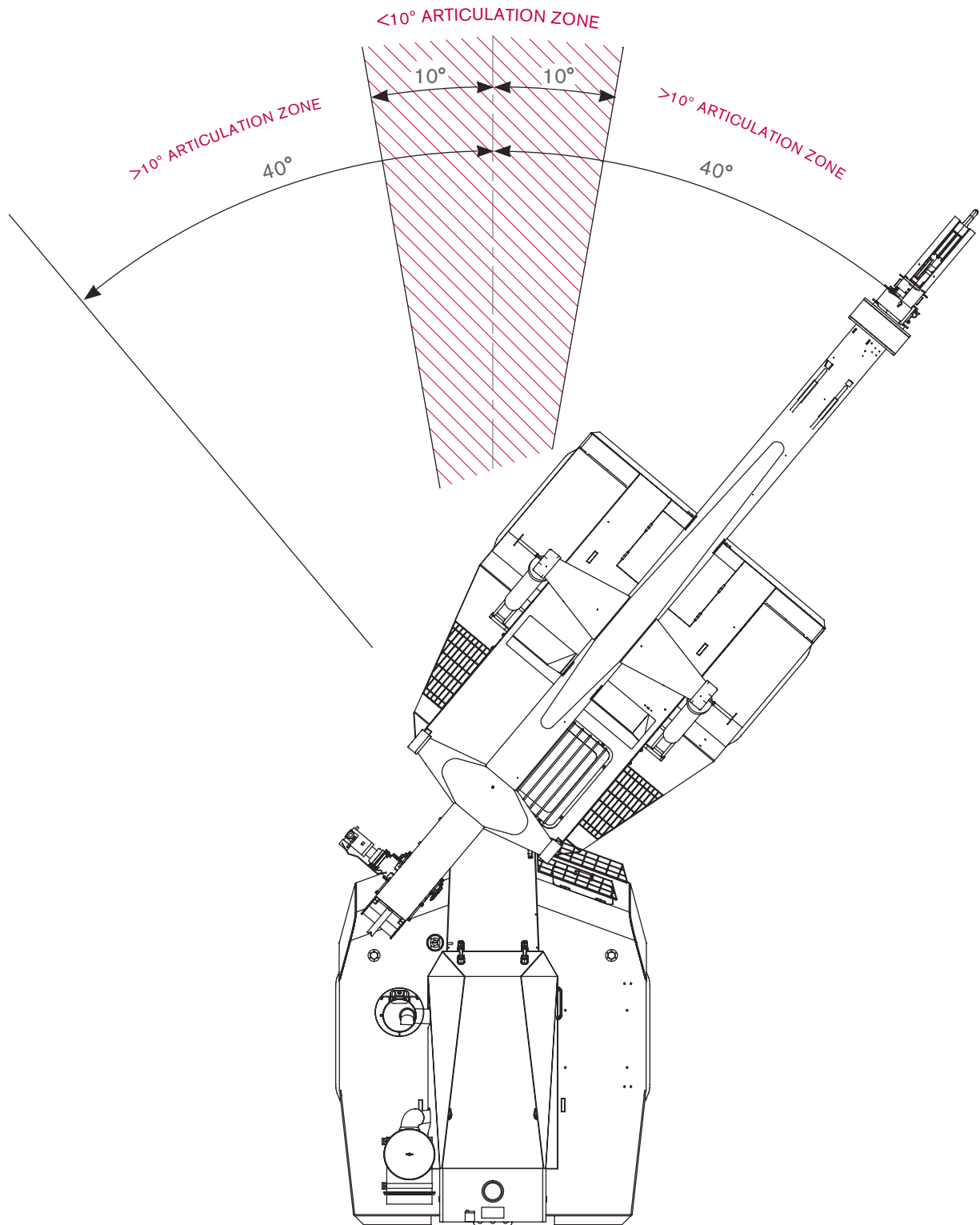


Pick & Carry 0.4 m/s (1.44 km/h); On rubber 66.6%



15000	9800	7200	5400	4300	3500	2900	2400	2100	1800	1550	RC (KG) 10° ART.	10 TONNE REAR AXLE
14000	8800	6300	4800	3800	3000	2500	2100	1800	1600	1350	RC (KG) 40° ART.	

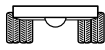




LOAD CHART

AT 15-3

Fallblock



Pick & Carry 0.4m/s (1.44 km/h); On rubber 66.6%



5.66-13.86 m

AS 1418.5

m	Boom Length (m)																		m	
	5.66	6.00	6.50	7.00	7.50	8.00	8.50	9.00	9.50	10.00	10.50	11.00	11.50	12.00	12.50	13.00	13.50	13.86		
1.6	10500	10500	10500	10500	10500														1.6	
	10500	10500	10500	10500	10500															
	48°	50°	54°	57°	59°															
2.0	10500	10500	10500	10500	10500	10500	10500												2.0	
	10500	10500	10500	10500	10500	10500	10500													
	42°	46°	50°	53°	56°	58°	60°													
2.5	10400	10350	10350	10350	10350	10350	10350	9950	9650										2.5	
	9250	9250	9250	9250	9250	9250	9250	9200	9200											
	34°	39°	44°	48°	51°	54°	56°	58°	60°											
3.0	8500	8500	8500	8500	8500	8500	8500	8500	8500	8300	7350								3.0	
	7600	7600	7600	7600	7600	7550	7550	7550	7550	7550	7350									
	25°	31°	37°	42°	46°	49°	52°	55°	57°	58°	60°									
3.5	7200	7200	7200	7200	7200	7200	7150	7150	7150	7150	6750	5950	5650						3.5	
	6400	6400	6400	6400	6400	6400	6400	6400	6350	6350	6350	5950	5650							
	9°	20°	30°	36°	41°	45°	48°	51°	53°	55°	57°	59°	60°							
4.0	6950	6250	6200	6200	6200	6200	6200	6200	6150	6150	5500	5250	5000	4800					4.0	
	6150	5550	5500	5500	5500	5500	5500	5500	5500	5500	5500	5450	5250	5000	4800					
	(3.61)	(3.95)	20°	28°	35°	39°	43°	46°	49°	52°	54°	56°	57°	59°	60°					
4.5			5450	5400	5400	5400	5400	5400	5400	5400	5400	5150	4900	4650	4500	4300	4150		4.5	
			4850	4800	4800	4800	4800	4800	4800	4800	4800	4800	4800	4650	4500	4300	4150			
			(4.45)	19°	28°	34°	38°	42°	45°	48°	50°	52°	54°	56°	57°	59°	60°			
5.0				4850	4800	4800	4800	4800	4800	4800	4800	4800	4800	4550	4350	4200	4050	3900	3800	5.0
				4300	4250	4250	4250	4250	4250	4250	4250	4250	4250	4250	4200	4200	4050	3900	3800	
				(4.95)	18°	27°	33°	37°	41°	44°	47°	49°	51°	53°	55°	56°	58°	59°		
6.0					4300	3900	3850	3850	3850	3850	3850	3850	3850	3850	3850	3700	3550	3300	3200	6.0
					3800	3450	3400	3400	3400	3400	3400	3400	3400	3400	3400	3400	3300	3200	3200	
					(5.45)	(5.95)	17°	25°	31°	35°	39°	42°	45°	47°	49°	51°	52°	54°		
7.0						3550	3200	3200	3200	3200	3200	3200	3200	3200	3200	3200	3050	2950	2850	7.0
						3100	2800	2800	2800	2800	2800	2800	2800	2800	2800	2800	2800	2800	2800	
						(6.45)	(6.95)	16°	24°	29°	34°	37°	40°	43°	45°	47°	48°			
8.0							2950	2700	2700	2700	2700	2700	2700	2700	2700	2700	2650	2600		8.0
							2600	2350	2350	2350	2350	2350	2350	2350	2350	2350	2350	2350		
							(7.45)	(7.95)	16°	23°	28°	32°	36°	38°	41°	43°				
9.0										2500	2300	2300	2300	2300	2300	2300	2300	2300	9.0	
										2200	2000	2000	2000	2000	2000	2000	2000	2000		
										(8.45)	(8.95)	15°	22°	27°	31°	34°	36°			
10.0													2150	2000	2000	2000	2000	2000	10.0	
													1850	1750	1750	1750	1750	1750		
													(9.45)	(9.95)	14°	21°	26°	29°		
11.0															1900	1750	1750	1750	11.0	
															1600	1500	1500	1500		
															(10.45)	(10.95)	14°	19°		
11.81																	1650	1550	11.81	
																1400	1350			
																(11.45)	(11.81)			

- RC (kg) < than 10° articulation
- RC (kg) > than 10° articulation
- Boom angle
- Radius at 0° boom angle
- Loads above red line are structural

Notes to lifting capacity

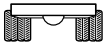
Lifting capacities do not exceed 66.6% of tipping load. Weight of hook blocks and slings is part of the load, and is to be deducted from the capacity ratings. Consult Rated Capacity Manual for further details.

Note: Data published herein is intended as a guide only and shall not be construed to warrant applicability for lifting purposes. Crane operation is subject to the computer charts and Rated Capacity Manual both supplied with the crane.

LOAD CHART

AT 15-3

Fallblock Manual

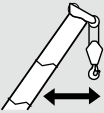


Pick & Carry 0.4 m/s (1.44 km/h); On rubber 66.6%



9.71–17.91 m

AS 1418.5

Maximum Radius 	Rated Capacity Maximum Extension Maximum Length 17.91 m
	m / kg
6.72	1850
	1850
	60°
9.29	1600
	1600
	50°
11.53	1300
	1300
	40°
13.35	1150
	1150
	30°
14.70	1050
	1050
	20°
15.54	1050
	950
	10°
15.86	1050
	950
	0°

Notes to lifting capacity

Read and understand warning notes before operating crane.

Weight of slings & hook block to be added to load.

Maximum extension length is 17.91m.

17.9 m boom length includes manual 3rd extension.

Ratings for manual extension are structural and based on boom angle, not radius.

The ratings do not change if the power sections are retracted with the manual section extended.

Lifting capacities do not exceed 66.6% of tipping load.

Weight of hook blocks and slings is part of the load, and is to be deducted from the capacity ratings.

Consult Rated Capacity Manual for further details.

Note: Data published herein is intended as a guide only and shall not be construed to warrant applicability for lifting purposes. Crane operation is subject to the computer charts and Rated Capacity Manual both supplied with the crane.

- RC (kg) < than 10° articulation
- RC (kg) > than 10° articulation
- Boom angle
- Loads above red line are structural